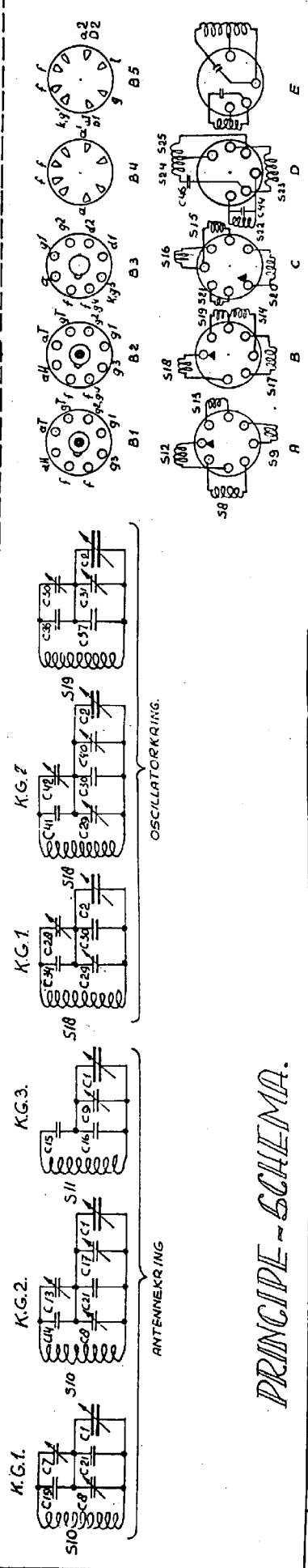
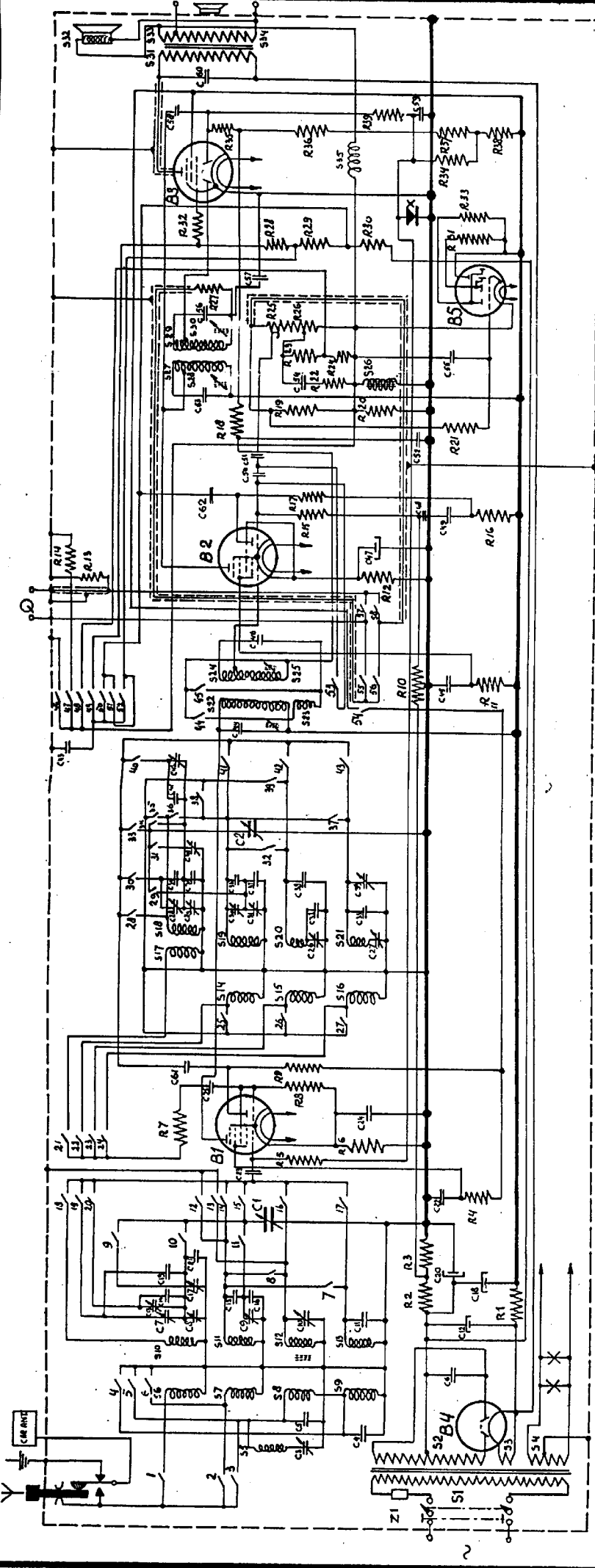


R. 1 2 3 4 5 6 7 8 9 10 11 12 13 14 15 16 17 18 19 20 21 22 23 24 25 26 27 28 29 30 31 32 33 34 35 36 37 38 39 40 41 42 43 44 45 46 47 48 49 50 51 52 53 54 55 56 57 58 59 60 61 62 63 64 65 66 67 68 69 70 71 72 73 74 75 76 77 78 79 80 81 82 83 84 85 86 87 88 89 90 91 92 93 94 95 96 97 98 99 100

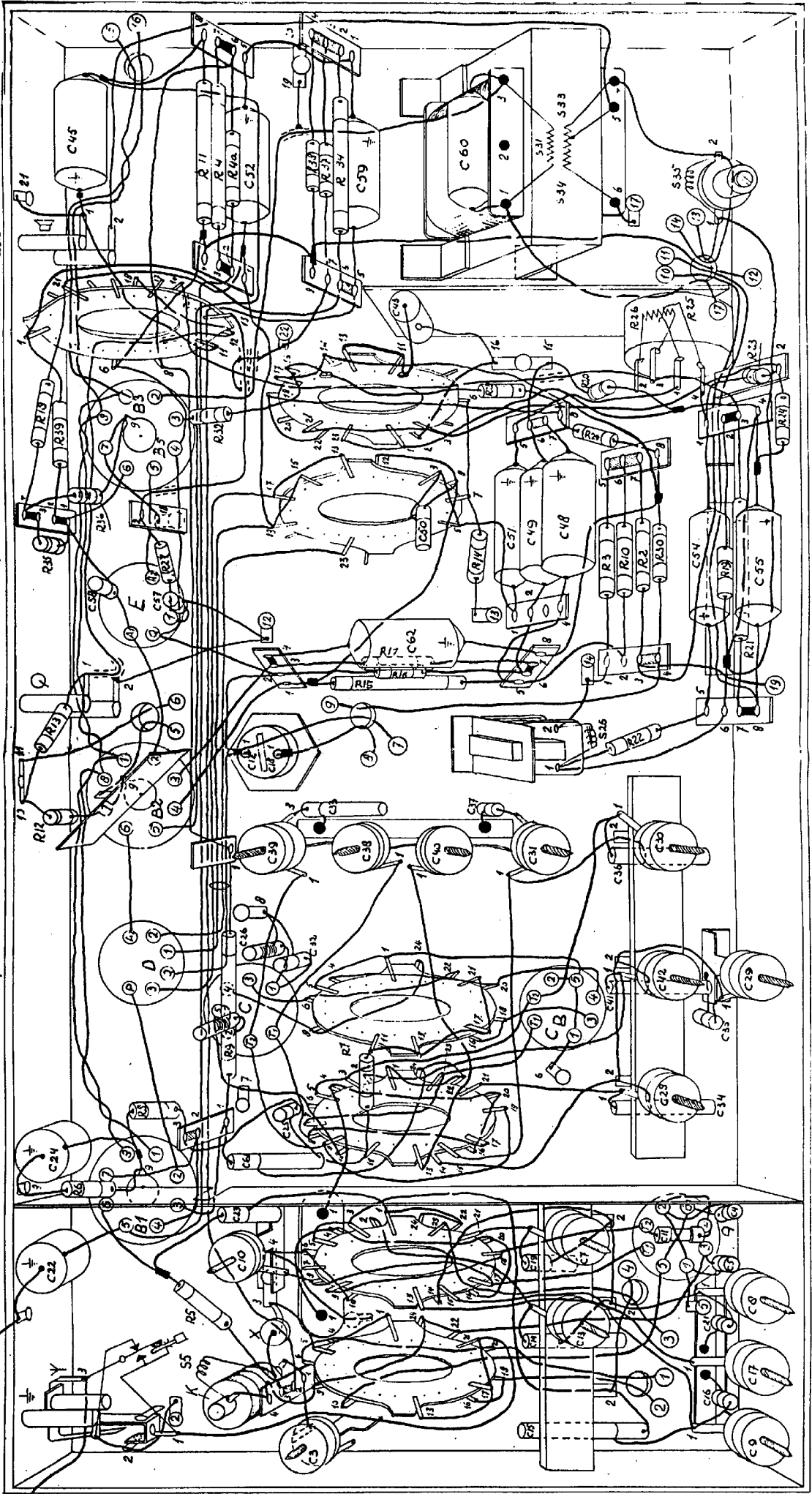


PRINCIPLE-SCHEMA.

GOLFLENGTE SCHAKELAAR.		KVAL. SCH.		GR.S.			
CONTRACT	1 2 3 4 5 6 7 8 9 10 11 12 13 14 15 16 17 18 19 20 21 22 23 24 25 26 27 28 29 30 31 32 33 34 35 36 37 38 39 40 41 42 43 44 45 46 47 48 49 50 51 52 53 54 55 56 57 58 59 60 61 62 63 64 65 66 67 68 69 70 71 72 73 74 75 76 77 78 79 80 81 82 83 84 85 86 87 88 89 90 91 92 93 94 95 96 97 98 99 100	CONTRACT	1 2 3 4 5 6 7 8 9 10 11 12 13 14 15 16 17 18 19 20 21 22 23 24 25 26 27 28 29 30 31 32 33 34 35 36 37 38 39 40 41 42 43 44 45 46 47 48 49 50 51 52 53 54 55 56 57 58 59 60 61 62 63 64 65 66 67 68 69 70 71 72 73 74 75 76 77 78 79 80 81 82 83 84 85 86 87 88 89 90 91 92 93 94 95 96 97 98 99 100	CONTRACT	1 2 3 4 5 6 7 8 9 10 11 12 13 14 15 16 17 18 19 20 21 22 23 24 25 26 27 28 29 30 31 32 33 34 35 36 37 38 39 40 41 42 43 44 45 46 47 48 49 50 51 52 53 54 55 56 57 58 59 60 61 62 63 64 65 66 67 68 69 70 71 72 73 74 75 76 77 78 79 80 81 82 83 84 85 86 87 88 89 90 91 92 93 94 95 96 97 98 99 100	CONTRACT	1 2 3 4 5 6 7 8 9 10 11 12 13 14 15 16 17 18 19 20 21 22 23 24 25 26 27 28 29 30 31 32 33 34 35 36 37 38 39 40 41 42 43 44 45 46 47 48 49 50 51 52 53 54 55 56 57 58 59 60 61 62 63 64 65 66 67 68 69 70 71 72 73 74 75 76 77 78 79 80 81 82 83 84 85 86 87 88 89 90 91 92 93 94 95 96 97 98 99 100
U-145-K							
45-2-M							
9-3-M							
174-586							
145-804							



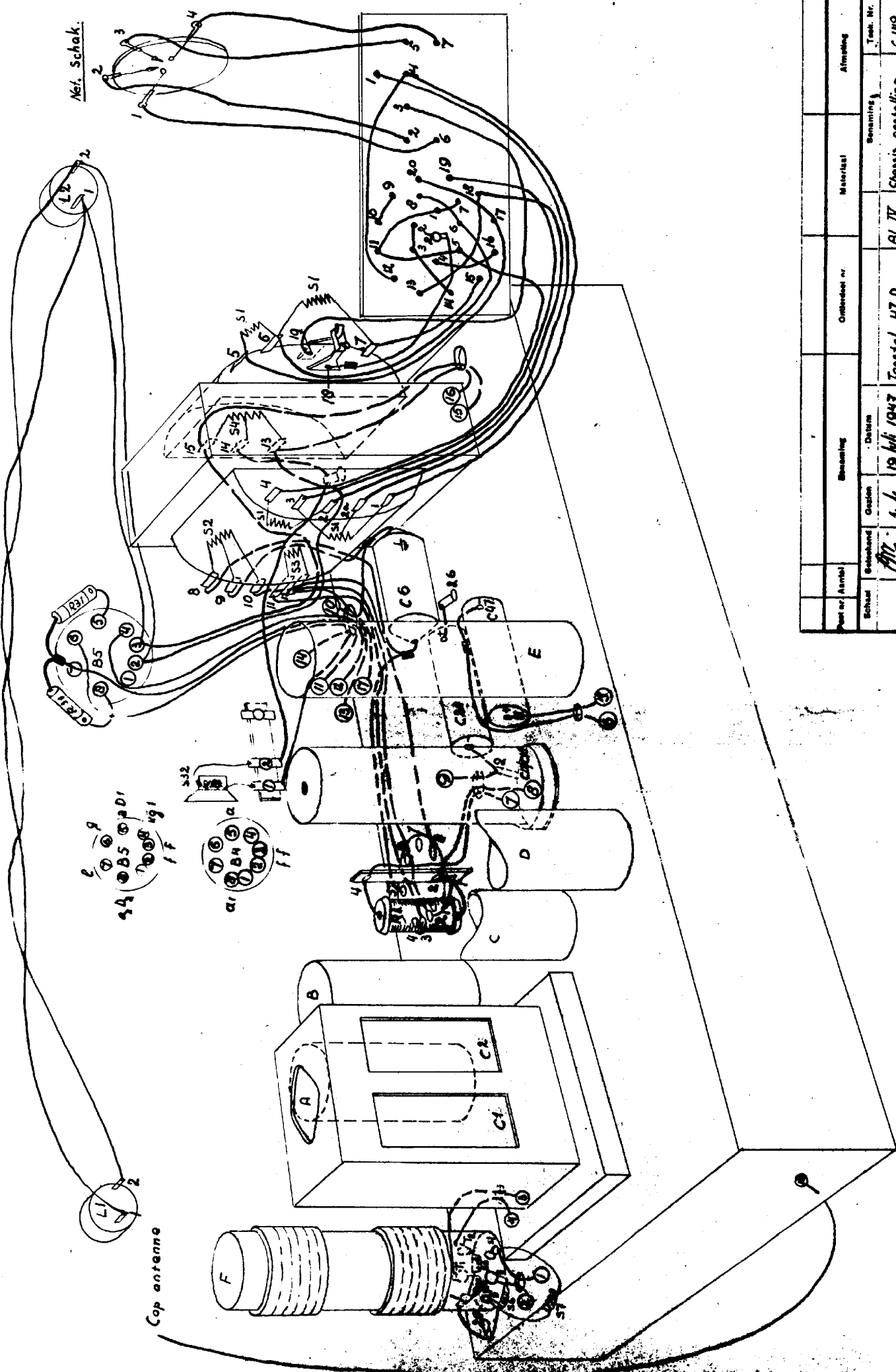
B1-B2



Schalt	Geraetend	Gaetzel	Datum	Betriebsystem	Benaming	Tekst No.
		Amk	10-10-47	Betriebsystem	BL III	C 148
					Ontvanger 47 D	
					Roblin	

N.V. WALDORP RADIO LEEGWATERSTRAAT 120 DEN HAAG

Net. Schak.



Post nr (Aantal)	Benoeming	Onderdeel nr.	Material	Afmeting
Schak	Geebeend	Gezien	Datum	Tek. Nr.
			19 Juli 1947	C/189
			Toestel 47 D, ¹⁰⁰ 100	Chassis opstelling.
			BL IV.	

N.V. WALDORP RADIO LEEGHWATERSTRAAT 120 DEN HAAG

307 D.L. No.

307 D.L. No.

No	Waarde	Codenummer	No	Waarde	Codenummer
1	11-390 pF	C31	1	<1 Ω	R20
2	11-390 pF	C32	2	<1 Ω	R21
3	30 pF	C33	3	18 Ω	R22
4	30 pF	C34	4	18 Ω	R23
5	30 pF	C35	5	39000 Ω	R24
6	22000 pF	C36	6	75 Ω	R25
7	30 pF	C37	7	10 Ω	R26
8	30 pF	C38	8	210 Ω	R27
9	30 pF	C39	9	27000 Ω	R28
10	30 pF	C40	10	27000 Ω	R29
11	82 pF	C41	11	270 Ω	R30
12	50 pF	C42	12	400 pF	R31
13	50 pF	C43	13	100 Ω	R32
14	275 pF	C44	14	0.2 Ω	R33
15	625 pF	C45	15	2.2 Ω	R34
16	85 pF	C46	16	0.2 Ω	R35
17	30 pF	C47	17	2.2 Ω	R36
18	20 pF	C48	18	0.2 Ω	R37
19	47 pF	C49	19	0.2 Ω	R38
20	100 pF	C50	20	0.2 Ω	R39
21	47000 pF	C51	21	0.2 Ω	R40
22	100 pF	C52	22	0.2 Ω	R41
23	100 pF	C53	23	0.2 Ω	R42
24	47000 pF	C54	24	0.2 Ω	R43
25	125 pF	C55	25	0.2 Ω	R44
26	200 pF	C56	26	0.2 Ω	R45
27	30 pF	C57	27	0.2 Ω	R46
28	30 pF	C58	28	0.2 Ω	R47
29	80 pF	C59	29	0.2 Ω	R48
30	50 pF	C60	30	0.2 Ω	R49

CONDENSATOREN.

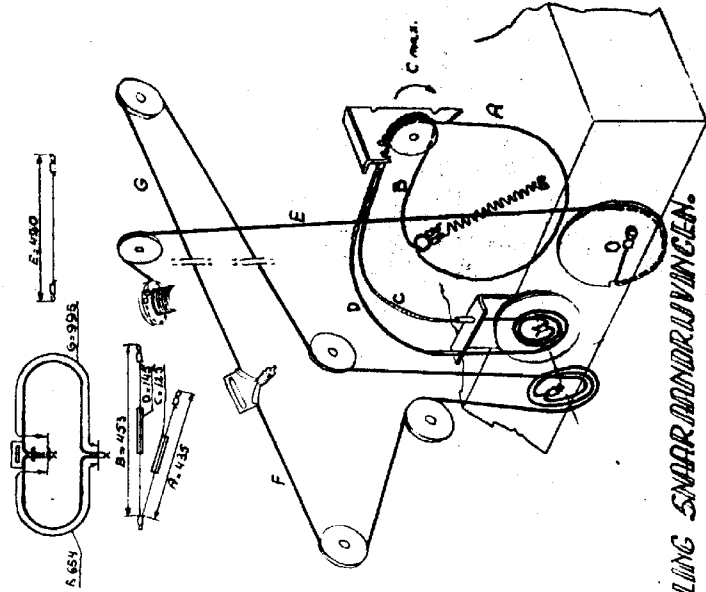
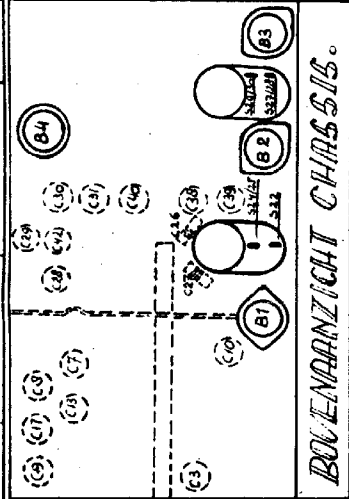
No	Waarde	Codenummer	No	Waarde	Codenummer
31	30 pF	C61	31	30 pF	C61
32	30 pF	C62	32	30 pF	C62
33	30 pF	C63	33	30 pF	C63
34	30 pF	C64	34	30 pF	C64
35	30 pF	C65	35	30 pF	C65
36	30 pF	C66	36	30 pF	C66
37	30 pF	C67	37	30 pF	C67
38	30 pF	C68	38	30 pF	C68
39	30 pF	C69	39	30 pF	C69
40	30 pF	C70	40	30 pF	C70
41	30 pF	C71	41	30 pF	C71
42	30 pF	C72	42	30 pF	C72
43	30 pF	C73	43	30 pF	C73
44	30 pF	C74	44	30 pF	C74
45	30 pF	C75	45	30 pF	C75
46	30 pF	C76	46	30 pF	C76
47	30 pF	C77	47	30 pF	C77
48	30 pF	C78	48	30 pF	C78
49	30 pF	C79	49	30 pF	C79
50	30 pF	C80	50	30 pF	C80

STROMEN e17 **SPANNINGEN.**

Va	Vg ₂ (+4)	Vk	Ia	Ig ₂ (+4)
235	100	2.8	43	4.8
125		2.8	7.5	
235	115	1.3	5.0	3.2
55		1.3	1.1	
240	235		3.0	3.8
VL*	V _{g2}	V _k	Ia	
235	23	2.8	3.4	

U_s best. het. opp. room 225 m² by 220 V

No	Waarde	Codenummer	No	Waarde	Codenummer
21	200 Ω	R20	21	2.2 MΩ	R21
22	18 Ω	R22	22	0.2 MΩ	R22
23	18 Ω	R23	23	0.2 MΩ	R23
24	39000 Ω	R24	24	0.2 MΩ	R24
25	75 Ω	R25	25	0.2 MΩ	R25
26	10 Ω	R26	26	0.2 MΩ	R26
27	210 Ω	R27	27	0.2 MΩ	R27
28	27000 Ω	R28	28	0.2 MΩ	R28
29	27000 Ω	R29	29	0.2 MΩ	R29
30	400 pF	R30	30	0.2 MΩ	R30
31	100 Ω	R31	31	0.2 MΩ	R31
32	0.2 Ω	R32	32	0.2 MΩ	R32
33	2.2 Ω	R33	33	0.2 MΩ	R33
34	0.2 Ω	R34	34	0.2 MΩ	R34
35	2.2 Ω	R35	35	0.2 MΩ	R35
36	0.2 Ω	R36	36	0.2 MΩ	R36
37	2.2 Ω	R37	37	0.2 MΩ	R37
38	0.2 Ω	R38	38	0.2 MΩ	R38
39	2.2 Ω	R39	39	0.2 MΩ	R39
40	0.2 Ω	R40	40	0.2 MΩ	R40



Post nr Aantal	Besamling	Onderdeel nr.	Materiaal	Besamling	Tek. Nr.
Schaal	Geveegd	Gaten	Datum	Documentatie	Bl. II ONTV. 47-D Rodijn C 147.
			7 OCT 1947		

N.V. WALDORP RADIO LEEGHWATERSTRAAT 120 DEN HAAG